



1812 RESIDENTIAL TELEPHONE INTERCOM SYSTEM



surface mount



flush mount



wall mount



talk

to your front door or gate from any telephone in your home!



control access

with a simple push of a button on your touch-tone telephone



full-duplex

Hi quality communication – the same standard that the phone company uses



three styles

to choose from; surface, wall or flush mount designs

- Unique communication and access control system that allows homeowners to use their telephone as an intercom to speak to a guest at a front door or gate
- System connects directly to the homeowners existing telephone line. No additional monthly expenses for a separate telephone line for the access system
- Calls from the access system are identified with a double ring while regular calls use the standard single long ring. Homeowners know instantly if a call is coming from their door or gate
- Homeowners grant their guest access by pressing 9 on their telephone, or they can deny access by simply hanging up
- Built-in call waiting feature assures that incoming calls or guest calls are not missed
- Windows compatible auto-programming software allows homeowners to program the system from their PC
- 2-year limited warranty

FEATURES

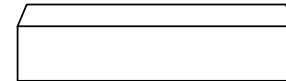
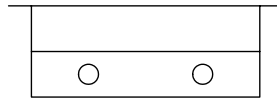
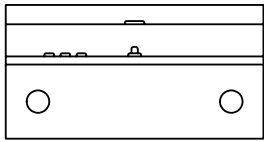
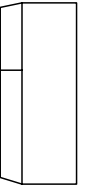
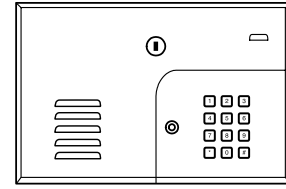
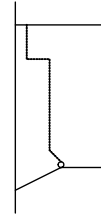
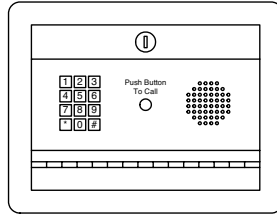
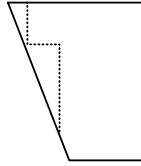
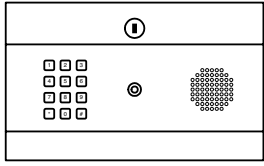
ACCESS CONTROL SOLUTIONS





1812 RESIDENTIAL TELEPHONE INTERCOM SYSTEM

is a unique communication and access control device that provides homeowners with two-way voice communication, and control of a door or gate, through their existing telephone. Visitors are easily identified by voice communication and can be granted or denied access directly from any telephone in the home. The many advanced features of the 1812, allow the homeowner complete control of their access system.



1812 Surface

10" W x 6.13" H x 5.25" D
254mm W x 156mm H x 133mm D

1812 Flush

11.88" W x 9.13" H x 4.5" D
302mm W x 232mm H x 112mm D

1812 Wall

10.75" W x 7.38" H x 3.5" D
273mm W x 187mm H x 88.9mm D

1812 Specs

Communication

True full duplex
Hands free

Styles

Surface mount - indoor or outdoor applications
Flush mount - indoor or outdoor applications
Wall mount - indoor or outdoor applications
Enclosures are NEMA 4x rated

Capacity

Single line
Two relays allow control of two doors or gates

Programming Methods

System keypad
Touch-tone telephone

Advanced Features

Call waiting
Call forwarding
Three (3) preprogrammed call out phone numbers
Unique ring
Multiple systems may share same phone line
Built-in clock
Do not disturb time zone
Four (4) hold-open time zones
50 4-digit entry codes
Entry code time zones
Call forwarding time zone
Flash entry code
Special intercom mode for use with PBX and KSU phone systems
Secondary keypad can be added for entry code access at a second door or gate
Camera Ready:
Optional B&W or Color CCTV camera* can be added to the 1812

*may require additional CCTV equipment

Operating Temp

10°F to 145°F
-12°C to 62°C
Optional heater kit available for colder climates

Electrical Requirements

24 VAC, 20 VA, 250ma
UL listed power transformer provided

Safety Standards

FCC (US) DUF6VT-12874-OT-0
DOC (CAN) 1736 4507 A
Complies with UL 294
ETL Listed

Shipping Weight

Approximately 15 lbs (7 kg)

Warranty

2 year limited factory warranty

Distributed by:

DOORKING, INC.
120 Glasgow Avenue, Inglewood, California 90301 U.S.A. Tel: 310-645-0023 FAX: 310-641-1586 www.doorking.com
© 2011 All Rights Reserved. Product specifications may change without notice. Rev. 2/11

MEMBER:

