
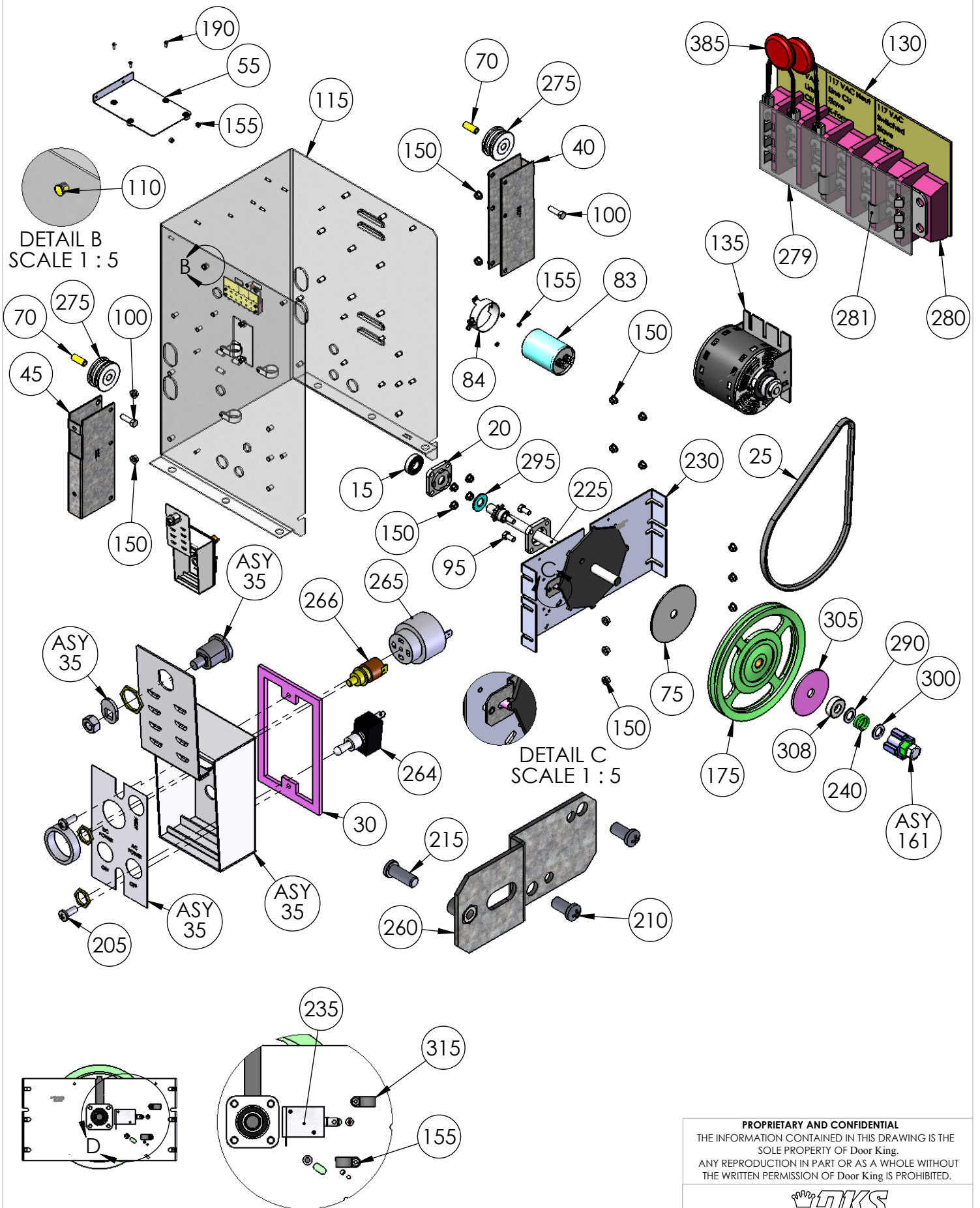


DETAIL A  
SCALE 1 : 2

<b>PROPRIETARY AND CONFIDENTIAL</b>			
THE INFORMATION CONTAINED IN THIS DRAWING IS THE SOLE PROPERTY OF Door King.			
ANY REPRODUCTION IN PART OR AS A WHOLE WITHOUT THE WRITTEN PERMISSION OF Door King IS PROHIBITED.			
			
Model 9150-084 1/2Hp 115Volt			
SIZE	DWG		REV
<b>A</b>		9150-884	<b>H</b>
SCALE: 1:12			SHEET 1 of 3



DETAIL B  
SCALE 1 : 5

DETAIL C  
SCALE 1 : 5

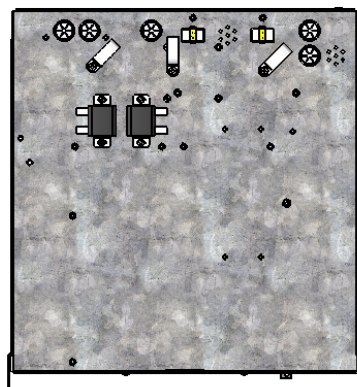
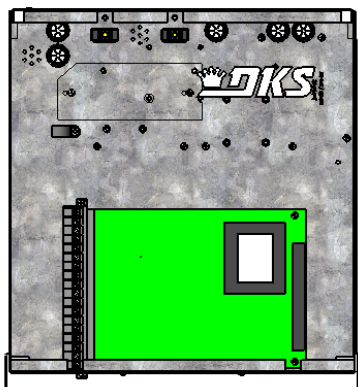
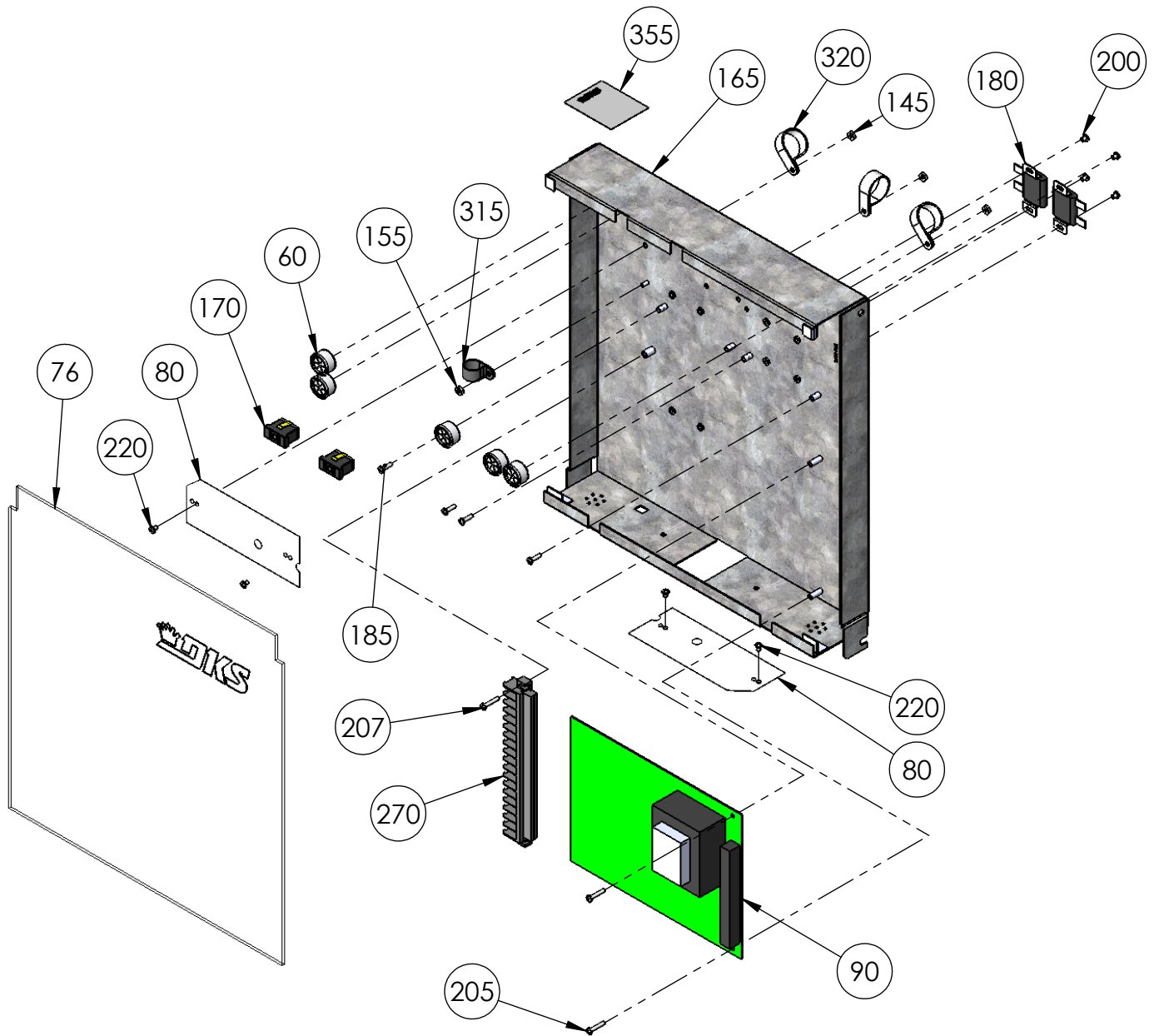
DETAIL D  
SCALE 1 : 6

**PROPRIETARY AND CONFIDENTIAL**  
 THE INFORMATION CONTAINED IN THIS DRAWING IS THE  
 SOLE PROPERTY OF Door King.  
 ANY REPRODUCTION IN PART OR AS A WHOLE WITHOUT  
 THE WRITTEN PERMISSION OF Door King IS PROHIBITED.

**DKS**

Model 9150-084  
 1/2Hp 115Volt

SIZE <b>A</b>	DWG 9150-884	REV <b>H</b>
SCALE:1:32		SHEET 2 of 3



**PROPRIETARY AND CONFIDENTIAL**  
 THE INFORMATION CONTAINED IN THIS DRAWING IS THE  
 SOLE PROPERTY OF Door King.  
 ANY REPRODUCTION IN PART OR AS A WHOLE WITHOUT  
 THE WRITTEN PERMISSION OF Door King IS PROHIBITED.



Model 9150-084  
 1/2Hp 115Volt

SIZE	DWG	REV
<b>A</b>	9150-884	<b>H</b>
SCALE: 1:8		SHEET 3 of 3

9150-084	Part #	Qt	Description
	1 9150-066	1	Manual Installation
	8 2802-040	2	Washer Push on Clamp
	9 2600-732	1	Nameplate Plastic DKS Big
	10 2600-852	1	Accessory Box 9150 Operator
	11 1897-052	2	Gasket, Microphone Support
	15 2600-440	1	Bearing Used in Slide Oper
	20 2600-453	1	Bearing Holder Plastic Back
	25 2600-694	1	Belt - AX36
	30 2600-731	1	Gasket Switch Cover
	35 2600-533	1	Switch Cover Doorlocking Lockable
	40 2600-965	1	Bracket Idler Left 9150
	45 2600-966	1	Bracket Idler Right 9150
	55 2600-938	1	Radio Tray 910
	60 2600-810	5	Bushing 7/8 Poke Thru Flaps
	70 2600-871	2	Bushing 1/2"ODx5/16"IDx1 5/16L
	75 2801-004	1	Clutch Pad 5" OD - 3/4" ID
	76 9150-006	1	Cover Plastic Model 9150
	80 2600-945	2	Cover Plastic Insulator
	83 2600-102	1	Capacitor 50uf 370VAC
	84 2600-875	1	Capacitor Mounting Clamp
	90 4602-010	1	PCB Slide Gate Operator
	95 2615-153	4	Bolt Hex Head 5/16-18 x 3/4
	100 2615-155	2	Bolt Hex Head 5/16-18 x 1 3/4
	105 2600-932	1	Door Model 9150
	110 2600-880	1	Hole Plug Plastic for 3/8 Hole
	115 2600-984	1	Housing-Model 9150
	120 4001-035	1	Lock N16058BDxSFx2K Key 16120
	125 1702-503	1	Cam 1.1/4
	130 2600-431	1	Marker Strip Silkscreened
	135 2600-129	1	Motor Assy 1/2 HP 6100-9100
	145 2902-006	3	Nut Nylon Lock 10-32
	150 2620-411	18	Nut Hex Flange Lock 5/16-18
	155 2902-003	18	Nut Nylon Lock 6-32
	157 2902-004	1	Nut Nylon Lock 8-32
	160 2620-409	8	Nut Hex Flange Lock 1/4-20
	161 2600-917	1	Jam Nut Magnet Subassy 910/915
	165 2600-962	1	Mount Plate PC Board Mod 9150
	170 1200-028	2	Outlet Snap-In Leviton 1306
	175 2600-957	1	Pulley 10 inch Aluminum Assy
	180 2600-848	2	Resistor Power 1 ohm 30 Watt
	185 2616-006	8	Screw Phillips Head 6-32x3/16
	190 2616-002	6	Screw Phillips Head 6-32 x 1/2
	200 2616-000	8	Screw Phillips Head 6-32 x 1/4
	205 2616-007	2	Screw Phillips Head 6-32x5/8"
	207 2616-019	1	Screw Phillips Head 8-32 x 3/4
	210 2616-051	2	Screw Phillips 10-32x3/8
	215 2616-052	1	Screw Phillips Head 10-32 x1/2
	220 2600-887	4	Screw Nylon Phillips 6-32x1/4"
	225 2600-904	1	Main Shaft Assembly
	230 2600-931	1	Bracket Shaft Support 915

235	2600-860	1 Solenoid Lock Assy 91XX
240	2600-446	1 Spring-Compression
260	2600-487	1 Bracket Solenoid Support
264	1601-041	1 Switch Toggle SPST 2POS
265	1506-071	1 Tone Generator Loud
266	1812-005	1 Switch Push Button N.O.
270	2901-002	1 Terminal 18 Pin
275	2600-886	2 Idler Wheel UHMW
279	3129-005	1 Terminal Block Cover 5 Positio
280	3130-008	1 Terminal Block 5 pin
281	2600-840	2 Jumper- Ring Tongue #8 Screw
285	2600-439	1 Washer Cup - Brass
290	2600-344	1 Washer 1 1/8"OD x 3/4"ID
295	2600-990	1 Washer Neoprene 1.5"x.725"x125
300	2600-345	1 Washer Hardened 1 1/4 x 3/4 ID
305	2620-035	1 Washer 4"ODx3/4"ID
307	2620-028	5 Washer 5/16" USS
308	2600-053	1 Bearing - Thrust 3/4 ID
310	2620-053	2 Lockwasher 5/16"
315	2600-619	5 Wire Clp-5/8" Concord 770-1209
320	2600-639	6 Wire Clamp-1"
325	2600-986	1 Wire Set 9150 1/2HP Operator
330	1804-031	15 Tie Wrap 4"
335	2600-749	2 Wire Connector STA-KON RC6
340	4001-018	7 Weather Stripping 50' rolls
345	2599-034	1 Label Gate Operator
349	2599-199	1 Label Universal
355	2599-008	1 Label Patent
360	2599-006	1 Decal SUPPLY GND
365	2599-199	1 Label Universal
370	2599-014	1 Decal Copper Wire Only
380	2599-100	2 Sign Warning
385	4001-093	1 MOV Assembly 130VAC
400	9150-065	1 Manual Installation