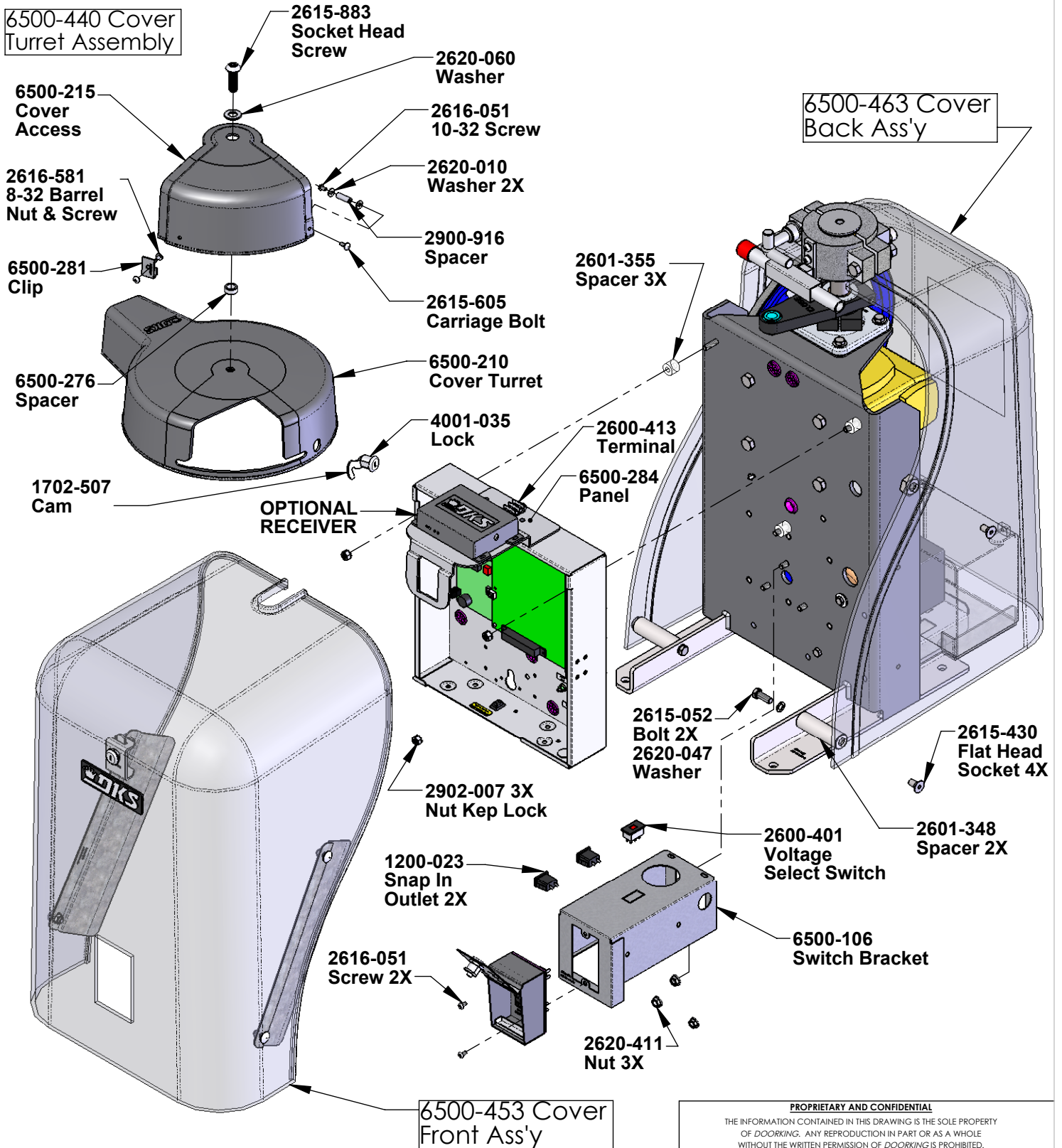


REVISIONS

ZONE	REV.	DESCRIPTION	DATE	APPR'D
	A	New Drawing	11/9/13	DC
	B-D	B Add Bushing plate 6500-123 1/14/15 DC, C Change 6500-120 Cap Plate to 6500-121 Alum 3-6-15 DC, D Add 2600-238 Cap Clamp, 3500-023 Capa, 4601-053 Fuse Assy, 2802-030 Heat sink, 2902-003 nut(2) 6/26/15		DC/D Q
	E	Added 9200-190 Resistor Kit UL325 to Note Block	3/16/16	DC
	F	Replace 6500-161 w/6500-162 Hub Ext Splined Replace 2600-717 with 2600-719 Gearbox, Remove 6500-146 Coupling, 2616-088 Set Screws and Keyways	5/11/16	DC



4. Item 9200-190 Resistor Kit UL325
 3. Item 6500-066 Manual Installation Quick Install
 2. Item 6500-065 Manual Installation Swing Gate
 1. Item 7082-187 Wire Set
- Included with Operator not Shown.

Notes: Unless Otherwise Specified.

PROPRIETARY AND CONFIDENTIAL

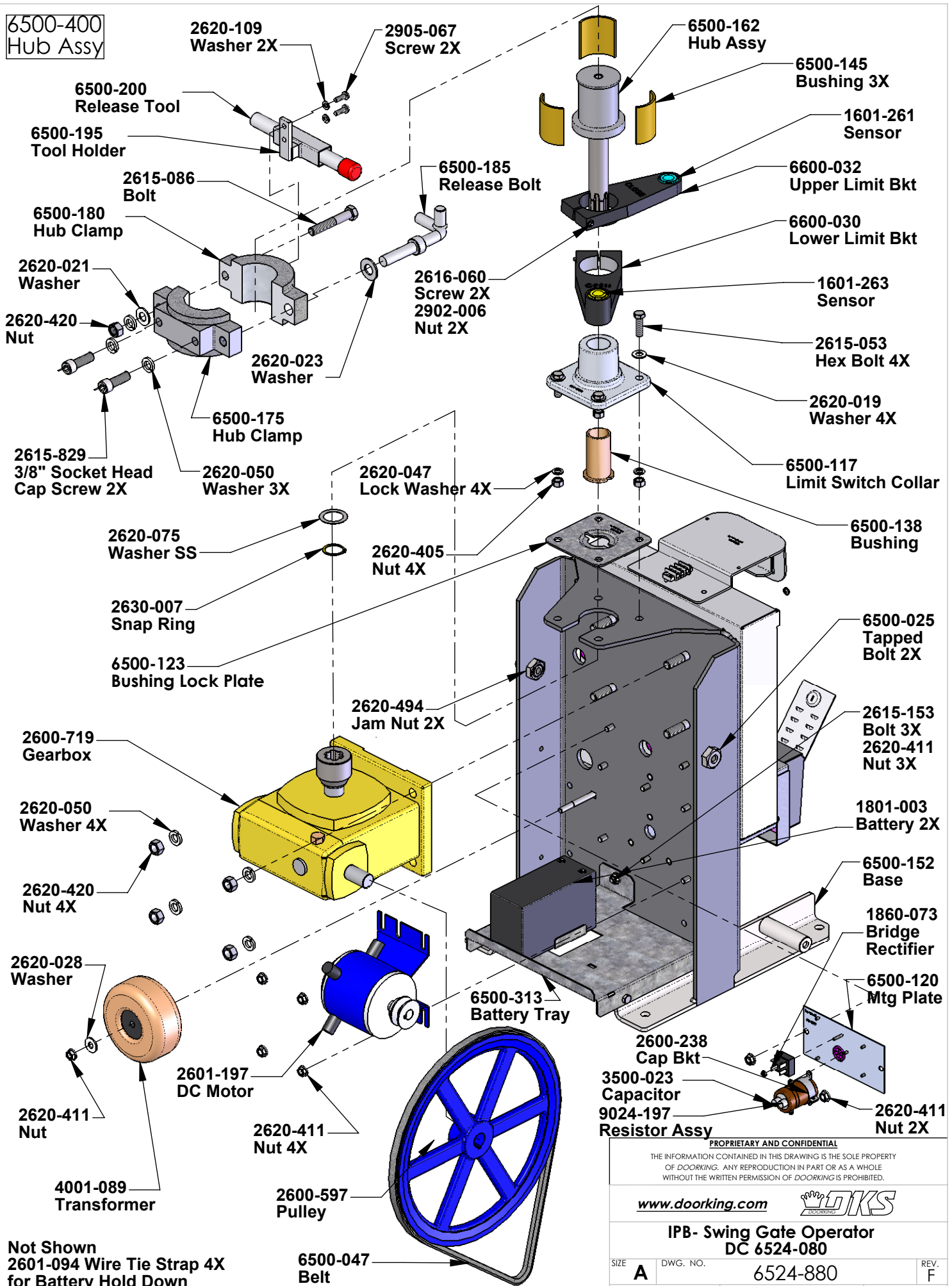
THE INFORMATION CONTAINED IN THIS DRAWING IS THE SOLE PROPERTY OF DOORKING. ANY REPRODUCTION IN PART OR AS A WHOLE WITHOUT THE WRITTEN PERMISSION OF DOORKING IS PROHIBITED.

www.doorking.com

**IPB- Swing Gate Operator
DC 6524-080**

SIZE	A	DWG. NO.	6524-880	REV.	F
Scale: None			SHEET 1 OF 4		

**6500-400
Hub Assy**



Not Shown
2601-094 Wire Tie Strap 4X
for Battery Hold Down

PROPRIETARY AND CONFIDENTIAL

THE INFORMATION CONTAINED IN THIS DRAWING IS THE SOLE PROPERTY OF DOORKING. ANY REPRODUCTION IN PART OR AS A WHOLE WITHOUT THE WRITTEN PERMISSION OF DOORKING IS PROHIBITED.

www.doorking.com

**IPB- Swing Gate Operator
DC 6524-080**

SIZE	DWG. NO.	REV.
A	6524-880	F
<small>Scale: None</small>		<small>SHEET 2 OF 4</small>

2616-001
Screw 4X
6-32 x 3/8"

OPTIONAL
LOOP
DETECTOR
BOARD

9350-100
Enclosure

2600-810
Wire Grommet
6X

2900-905
Standoff
6-32 x 7/16"

2616-001
Screw 3X
6-32 x 3/8"

1400-021
Momentary
Switch

2599-006
Label Ground

4100-010
DC Board

2616-003
Screw 2X
6-32 x 3/4"

1601-007
Terminal
Strip

4001-109
MOV Assy

2600-414
Terminal
Strip

3129-002
Cover

2600-410
Marker

2599-014
Label Copper
Wire Only

2600-439
Cup Washer
2902-010
Nut Ground

2902-010
Nut 8-32
Green Grd

4001-035
Lock

1702-505
Lock Cam

1400-022
Momentary
Switch

2600-528
Switch Box

2600-731
Gasket

1506-071
Alarm

2600-402
Rocker Switch
On-Off 2X

2600-408
Rocker Switch
On-Off 2X

- Item 6524-005 Cover Plastic Screened not shown for clarity.
- Notes: Unless Otherwise Specified.

PROPRIETARY AND CONFIDENTIAL

THE INFORMATION CONTAINED IN THIS DRAWING IS THE SOLE PROPERTY OF DOORKING. ANY REPRODUCTION IN PART OR AS A WHOLE WITHOUT THE WRITTEN PERMISSION OF DOORKING IS PROHIBITED.

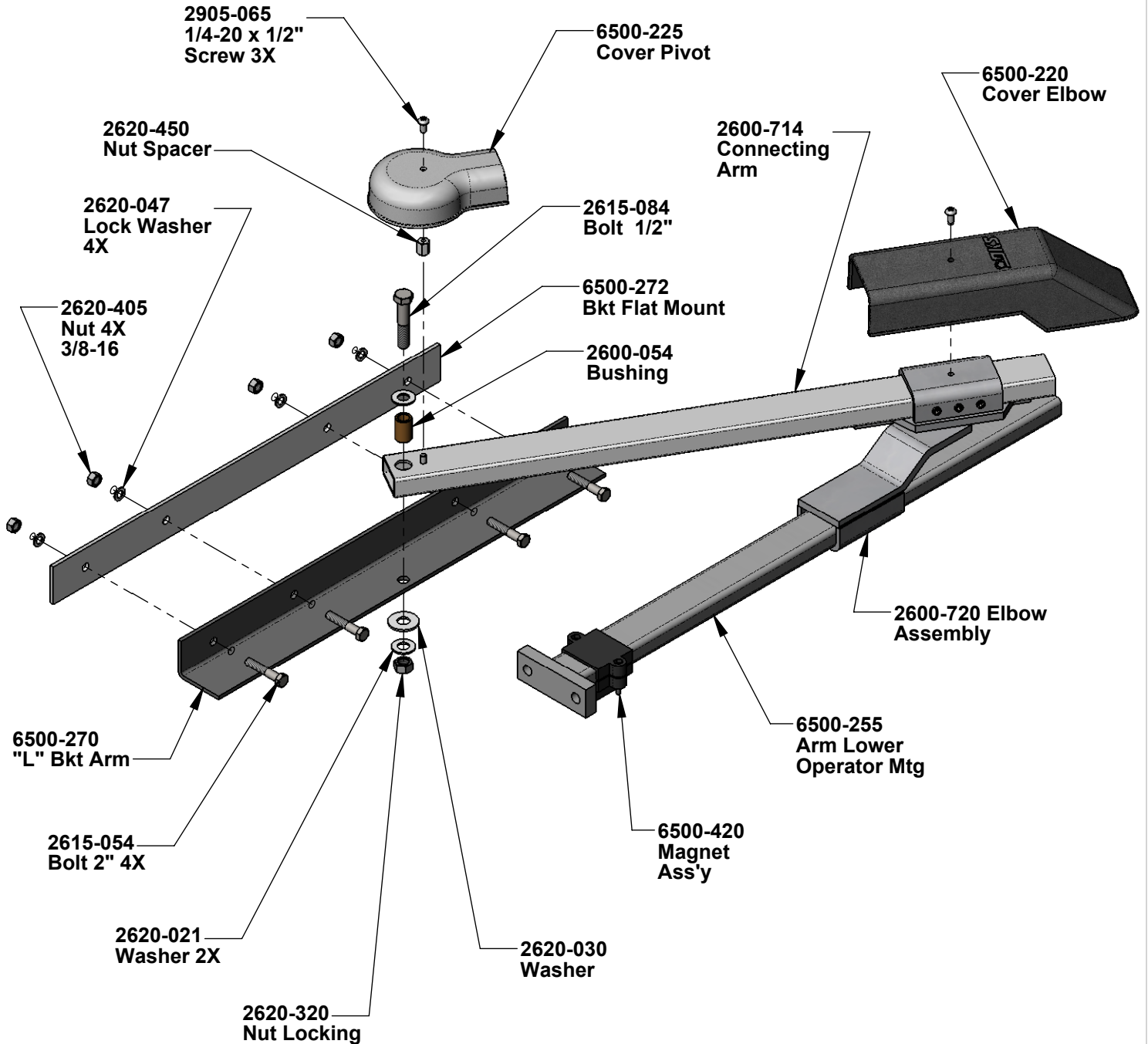
www.doorking.com



**IPB- Swing Gate Operator
DC 6524-080**

SIZE A	DWG. NO. 6524-880	REV. F
Scale: None		SHEET 3 OF 4


6500-430 Full
Assembly
Main Arm



Notes: Unless Otherwise Specified.

PROPRIETARY AND CONFIDENTIAL

THE INFORMATION CONTAINED IN THIS DRAWING IS THE SOLE PROPERTY
OF DOORKING. ANY REPRODUCTION IN PART OR AS A WHOLE
WITHOUT THE WRITTEN PERMISSION OF DOORKING IS PROHIBITED.

www.doorking.com 

**IPB- Swing Gate Operator
DC 6524-080**

SIZE	DWG. NO.	REV.
A	6524-880	F
Scale: None		SHEET 4 OF 4