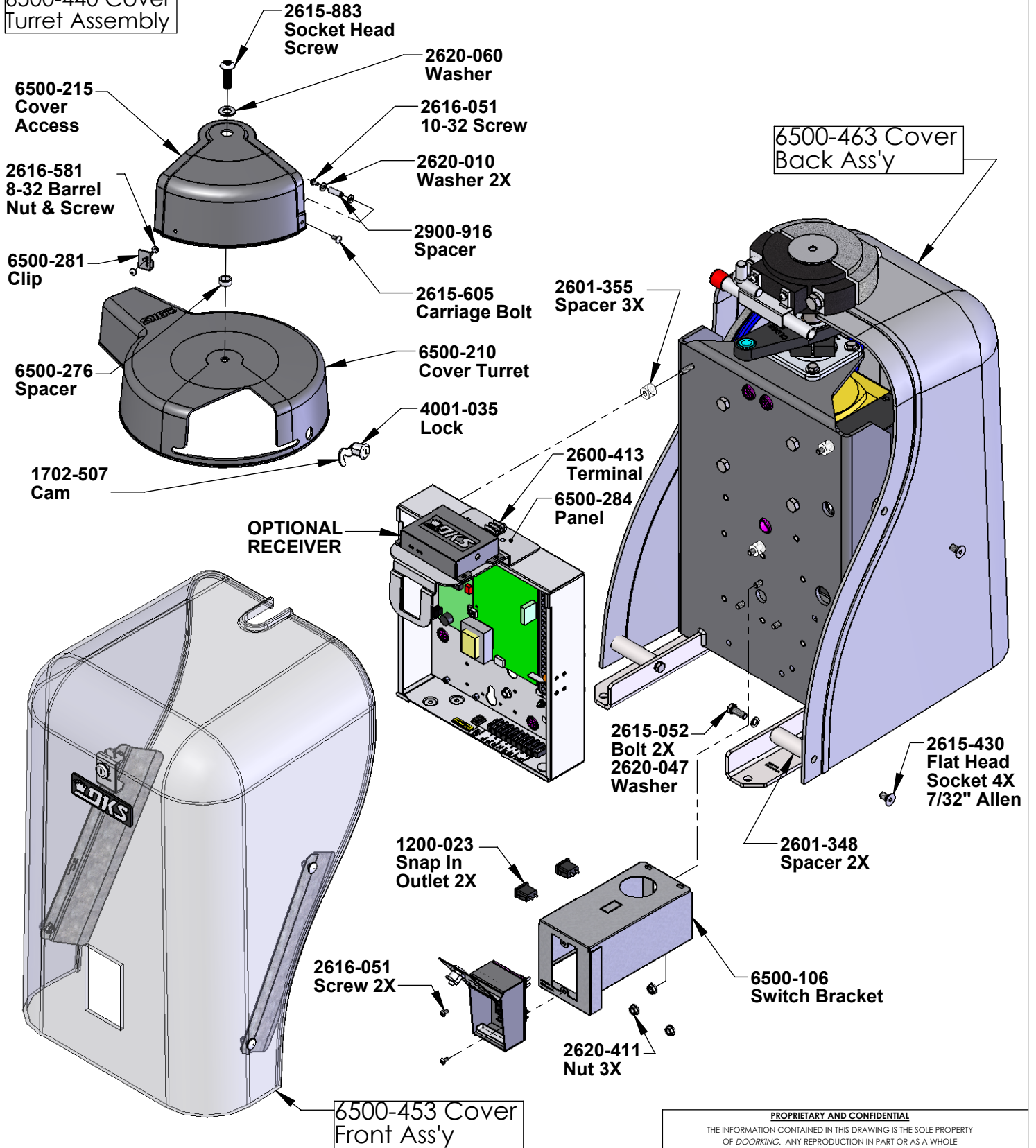


REVISIONS

| ZONE | REV. | DESCRIPTION | DATE | APPR'D |
|------|------|--|--------|--------|
| | J | 6500-152 Base was 6500-150, 9350-100 Control Box was 6500-100, 6500-106 Switch box Mount was 6500-105, 6500-453 Cover Front was 6500-450, 6500-453 Cover Back was 6500-460, 6500-006 Lexan Panel was 6500-005, Add 2601-355 Nylon Spacer(3), Add 6500-284 Lock Panel, Add 6500-025 Bolt (2), 2620-494 Jam Nut (2), 6500-310 Battery Bkt was 6500-110 | 9/9/14 | DC |

6500-440 Cover Turret Assembly



- 3. Item 6500-066 Manual Installation Quick Install
 - 2. Item 6500-065 Manual Installation Swing Gate
 - 1. Item 6500-043 Wire Set
- Included with Operator not Shown.

Notes: Unless Otherwise Specified.

PROPRIETARY AND CONFIDENTIAL

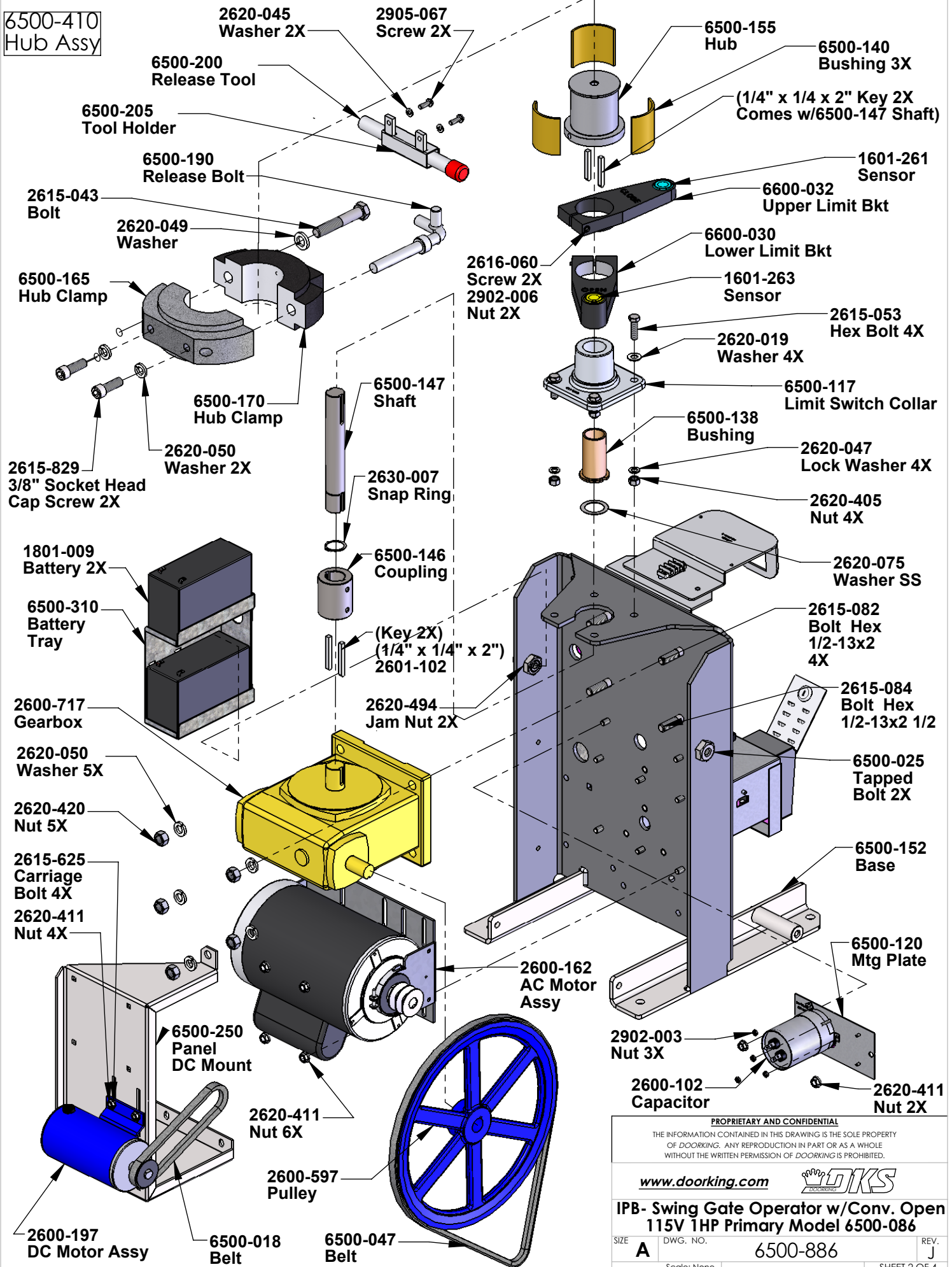
THE INFORMATION CONTAINED IN THIS DRAWING IS THE SOLE PROPERTY OF DOORKING. ANY REPRODUCTION IN PART OR AS A WHOLE WITHOUT THE WRITTEN PERMISSION OF DOORKING IS PROHIBITED.

www.doorking.com

IPB- Swing Gate Operator w/Conv. Open 115V 1HP Primary Model 6500-086

| | | | |
|-------------|----------|--------------|----------|
| SIZE | DWG. NO. | 6500-886 | REV. |
| A | | | J |
| Scale: None | | SHEET 1 OF 4 | |

**6500-410
Hub Assy**



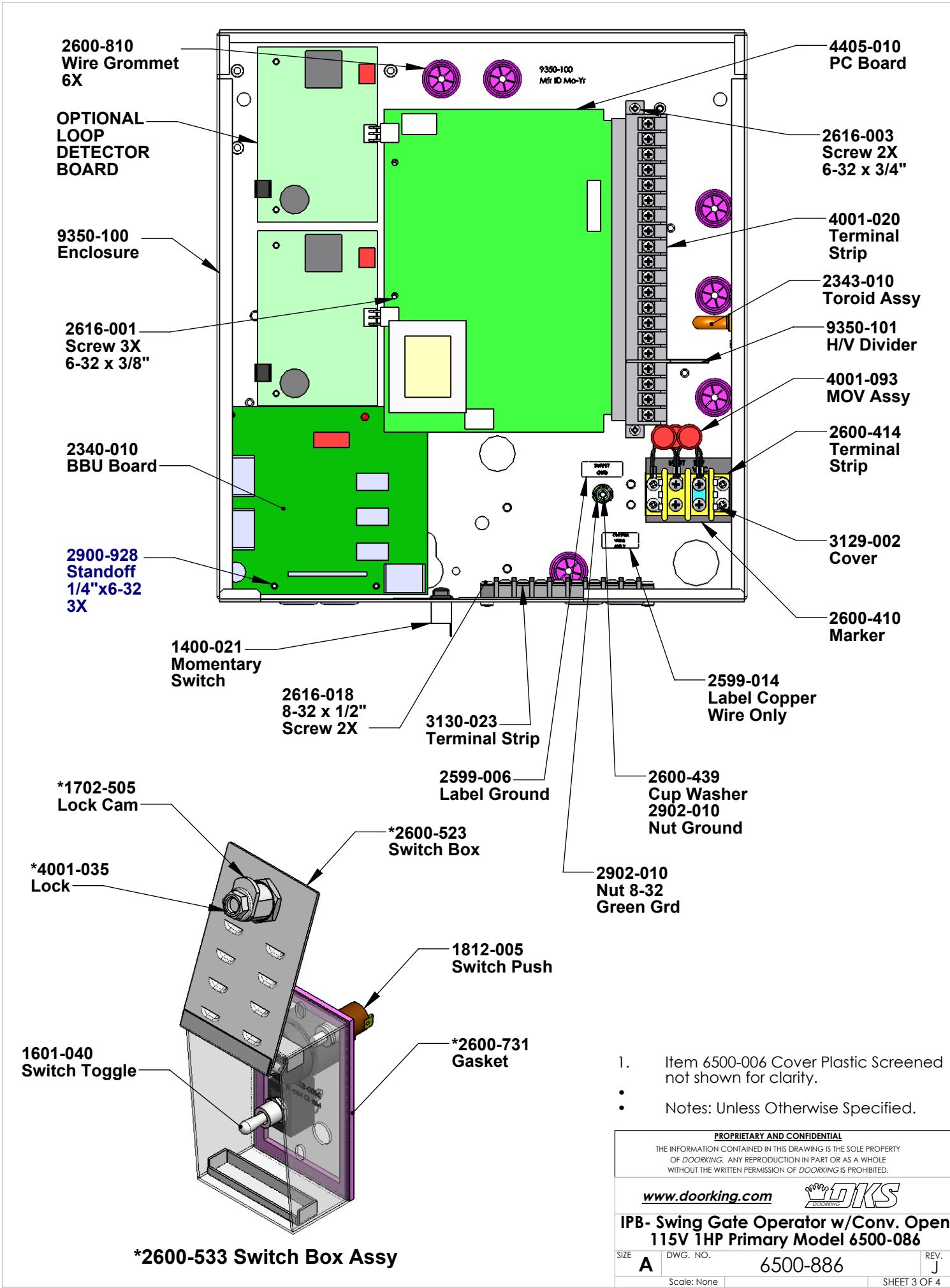
PROPRIETARY AND CONFIDENTIAL
 THE INFORMATION CONTAINED IN THIS DRAWING IS THE SOLE PROPERTY OF DOORING. ANY REPRODUCTION IN PART OR AS A WHOLE WITHOUT THE WRITTEN PERMISSION OF DOORING IS PROHIBITED.

www.dooring.com 

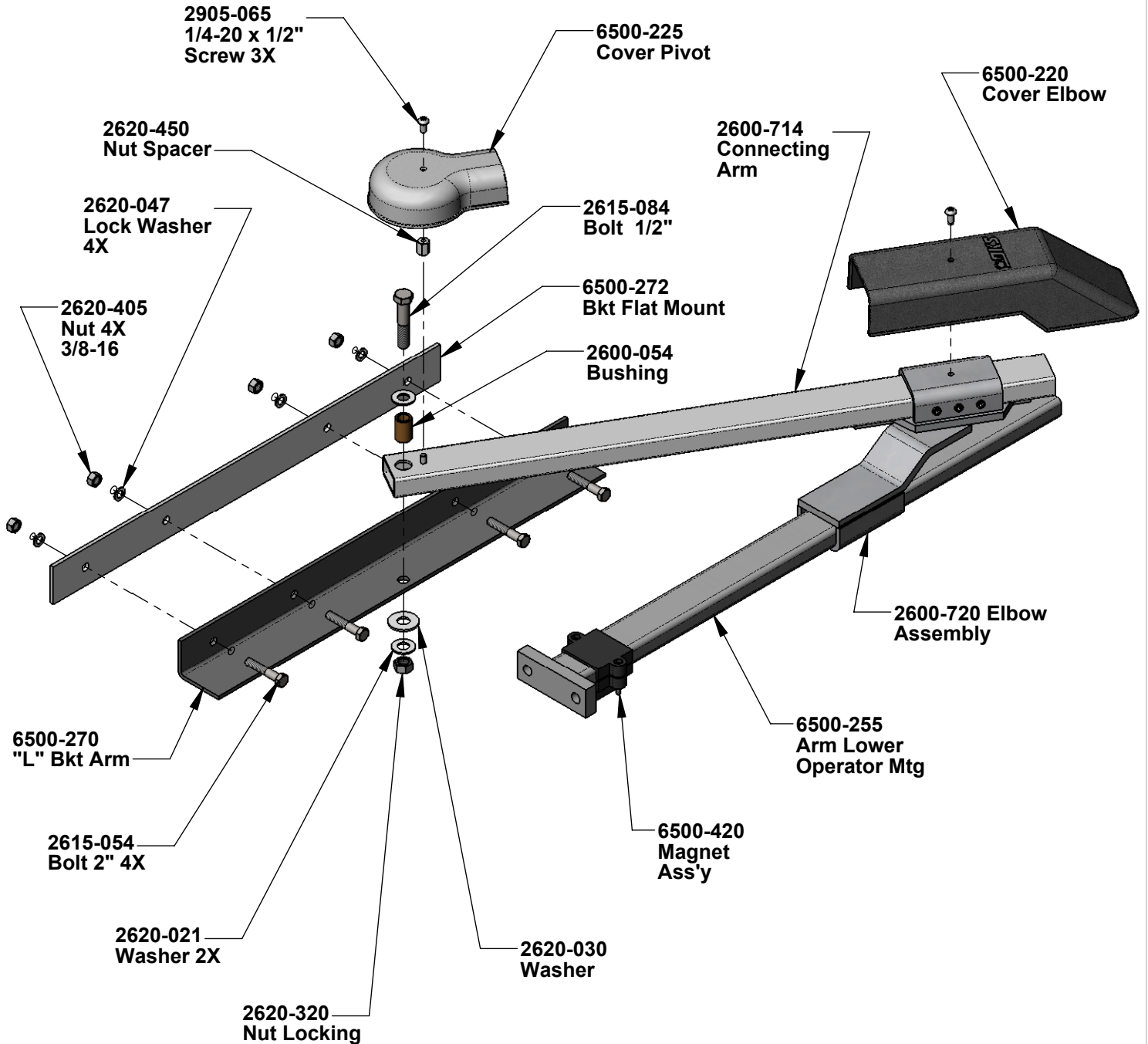
IPB- Swing Gate Operator w/Conv. Open 115V 1HP Primary Model 6500-086

| | | |
|------|----------|------|
| SIZE | DWG. NO. | REV. |
| A | 6500-886 | J |

Scale: None SHEET 2 OF 4



6500-430 Full
Assembly
Main Arm



Notes: Unless Otherwise Specified.

| | | | |
|---|----------------------|-----------------------------|--|
| PROPRIETARY AND CONFIDENTIAL | | | |
| <small>THE INFORMATION CONTAINED IN THIS DRAWING IS THE SOLE PROPERTY OF DOORING. ANY REPRODUCTION IN PART OR AS A WHOLE WITHOUT THE WRITTEN PERMISSION OF DOORING IS PROHIBITED.</small> | | | |
| www.dooring.com | | | |
| IPB- Swing Gate Operator w/Conv. Open 115V 1HP Primary Model 6500-086 | | | |
| SIZE A | DWG. NO. 6500-886 | REV. J | |
| <small>Scale: None</small> | | <small>SHEET 4 OF 4</small> | |