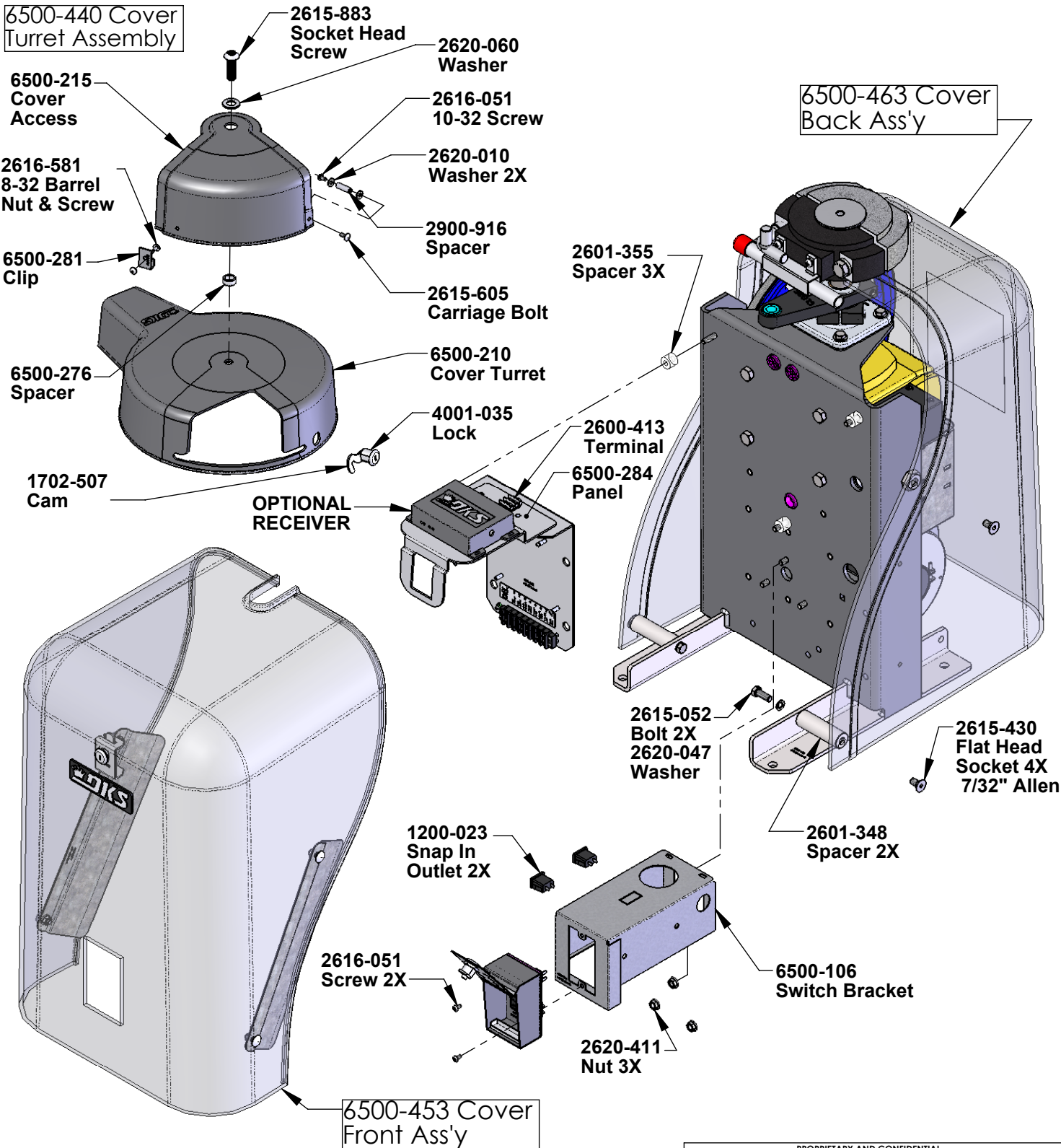


REVISIONS

ZONE	REV	DESCRIPTION	DATE	APR'D
	H	6500-152 Base was 6500-150, 6500-106 Switch box Mount was 6500-105, 6500-453 Cover Front was 6500-450, 6500-463 Cover Back was 6500-460, 6500-232 Panel Secondary was 6500-230, 2615-435 Flat Head Bolt (4) was 2615-580, Add 6500-284 Lock Panel, Add 2601-348 Spacer (2), Add 6500-025 Bolt (2) and 2620-494 Jam Nut (2)	9/9/14	DC
	I	In Sub-Assy 6500-400 added 6500-156 Hub Assy w/Extension Shaft, Remove 6500-155 Hub, 6500-147 Extension Shaft and 2616-099 Set Screw 2X, Add 6500-123 Bushing Lock Plate	4/29/15	DC
	J	Replace 6500-161 w/6500-162 Hub Ext Splined Replace 2600-717 with 2600-719 Gearbox, Remove 6500-146 Coupling, 2616-088 Set Screws and Keyways	5/11/16	DC



- 3. Item 6500-066 Manual Installation Quick Install
 - 2. Item 6500-065 Manual Installation Swing Gate
 - 1. Item 6500-043 Wire Set
- Included with Operator not Shown.

Notes: Unless Otherwise Specified.

PROPRIETARY AND CONFIDENTIAL

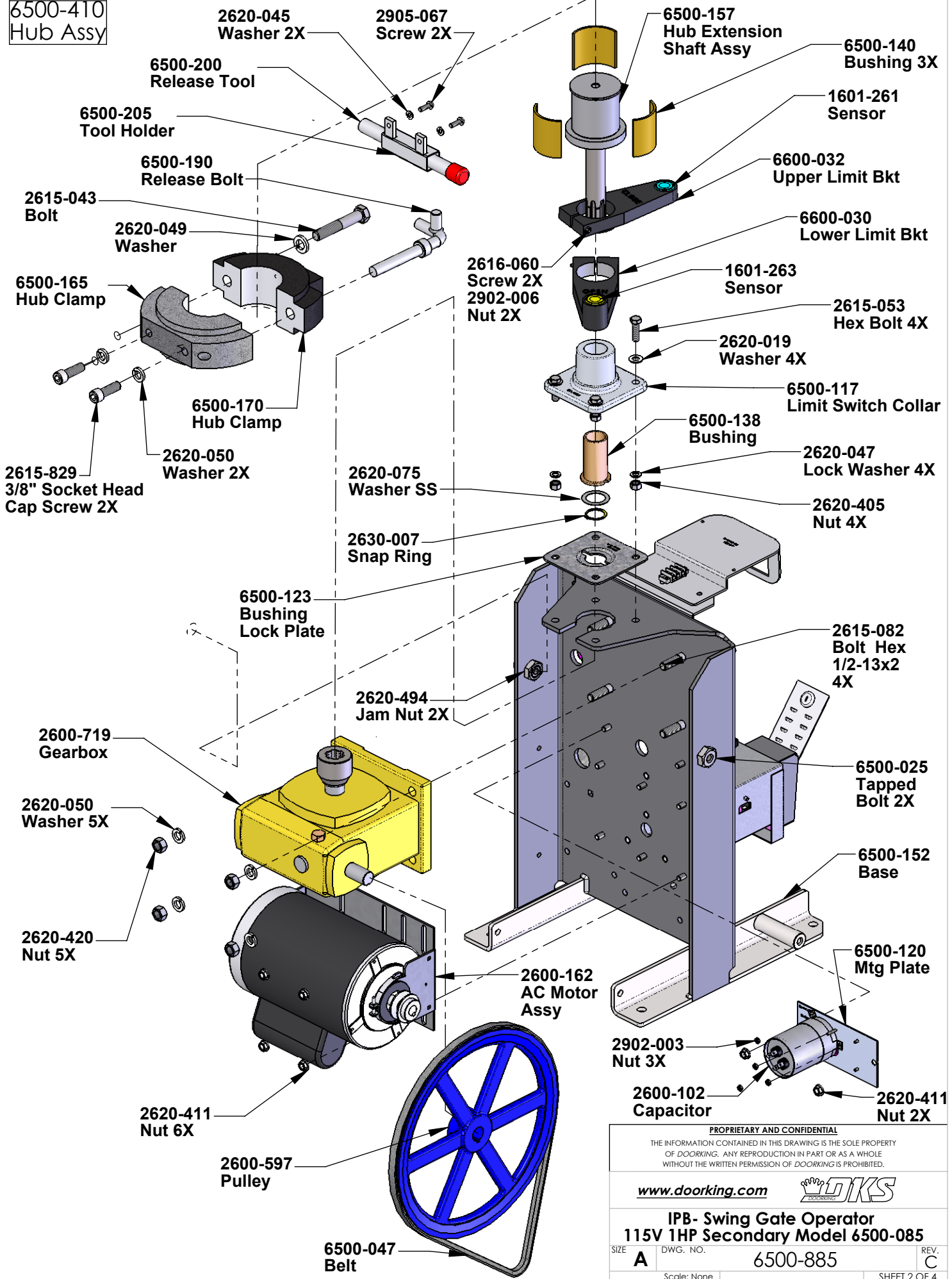
THE INFORMATION CONTAINED IN THIS DRAWING IS THE SOLE PROPERTY OF DOORING. ANY REPRODUCTION IN PART OR AS A WHOLE WITHOUT THE WRITTEN PERMISSION OF DOORING IS PROHIBITED.

www.dooring.com

**IPB- Swing Gate Operator
115V 1HP Secondary Model 6500-085**

SIZE	DWG. NO.	6500-885	REV.	C
A				C
Scale: None		SHEET 1 OF 4		

**6500-410
Hub Assy**



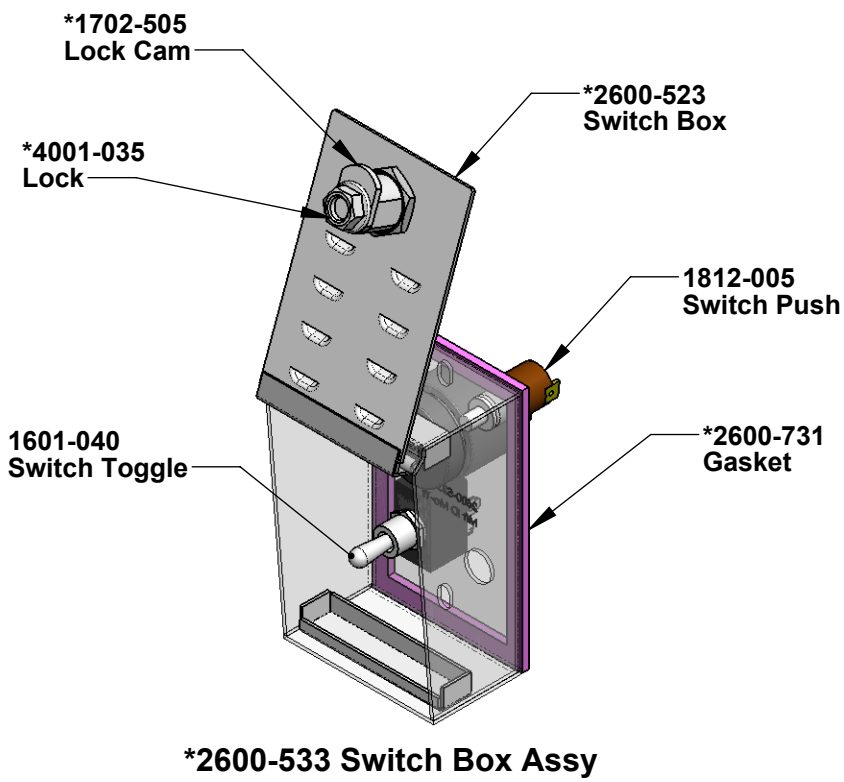
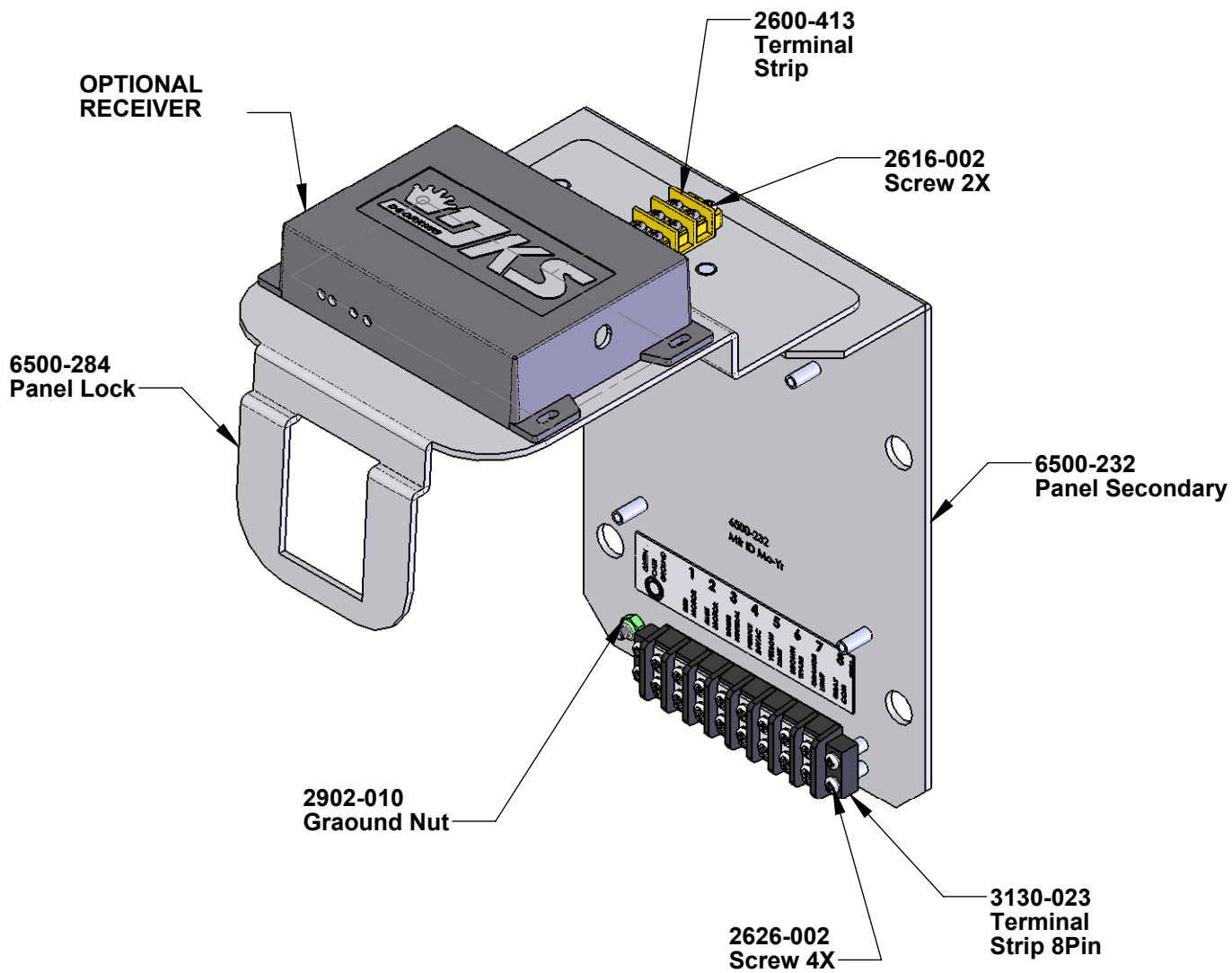
PROPRIETARY AND CONFIDENTIAL
 THE INFORMATION CONTAINED IN THIS DRAWING IS THE SOLE PROPERTY OF DOORKING. ANY REPRODUCTION IN PART OR AS A WHOLE WITHOUT THE WRITTEN PERMISSION OF DOORKING IS PROHIBITED.

www.doorking.com 

**IPB- Swing Gate Operator
115V 1HP Secondary Model 6500-085**

SIZE	DWG. NO.	REV.
A	6500-885	C

Scale: None SHEET 2 OF 4



- 1.
2. Notes: Unless Otherwise Specified.

PROPRIETARY AND CONFIDENTIAL

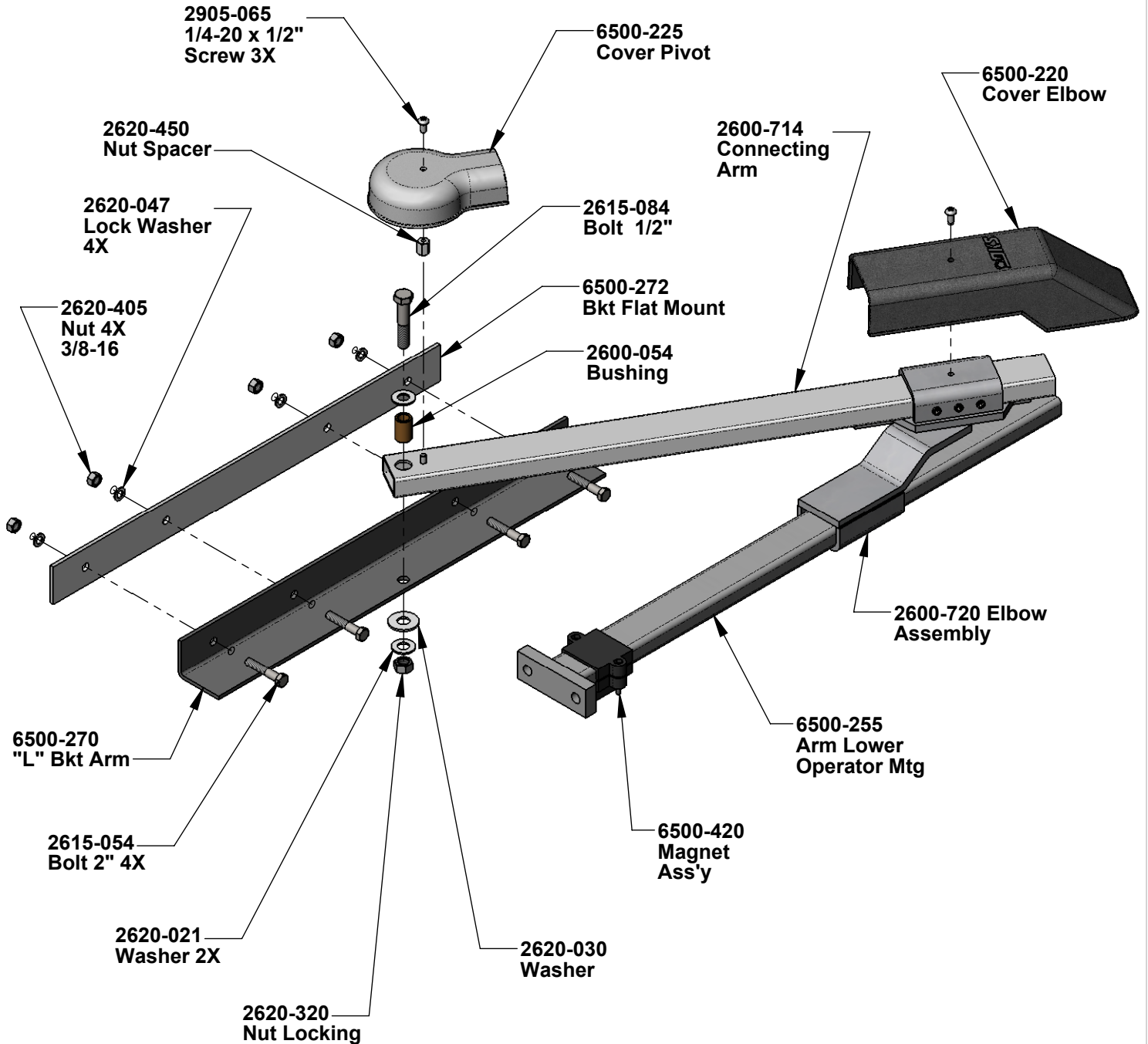
THE INFORMATION CONTAINED IN THIS DRAWING IS THE SOLE PROPERTY OF DOORING. ANY REPRODUCTION IN PART OR AS A WHOLE WITHOUT THE WRITTEN PERMISSION OF DOORING IS PROHIBITED.

www.dooring.com

**IPB- Swing Gate Operator
115V 1HP Secondary Model 6500-085**

SIZE	DWG. NO.	REV.
A	6500-885	C
Scale: None		SHEET 3 OF 4


6500-430 Full
Assembly
Main Arm



Notes: Unless Otherwise Specified.

PROPRIETARY AND CONFIDENTIAL

THE INFORMATION CONTAINED IN THIS DRAWING IS THE SOLE PROPERTY
OF DOORING. ANY REPRODUCTION IN PART OR AS A WHOLE
WITHOUT THE WRITTEN PERMISSION OF DOORING IS PROHIBITED.

www.dooring.com 

**IPB- Swing Gate Operator
115V 1HP Secondary Model 6500-085**

SIZE	DWG. NO.	REV.
A	6500-885	C
Scale: None		SHEET 4 OF 4