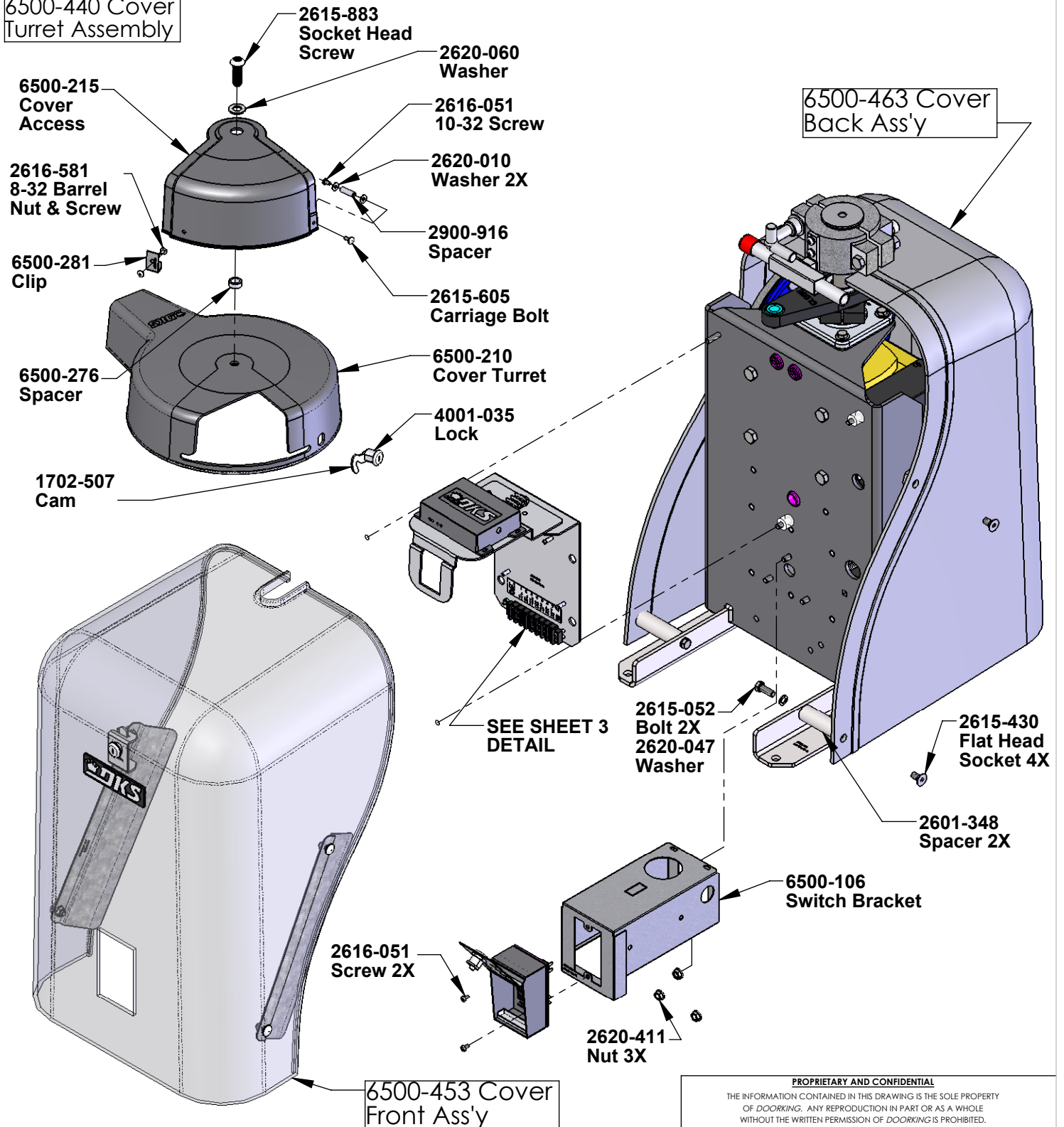


REVISIONS

ZONE	REV.	DESCRIPTION	DATE	APPR'D
	H	6500-152 Base was 6500-150, 6500-106 Switch box Mount was 6500-105, 6500-453 Cover Front was 6500-450, 6500-463 Cover Back was 6500-460, 6500-232 Panel Secondary was 6500-230, 2615-430 Flat Head Bolt (4) was 2616-580, Add 6500-284 Lock Panel, Add 2601-348 Spacer (2), Add 6500-025 Bolt (2) and 2620-494 Jam Nut (2),	9/9/14	DC
Pg2	I	In Sub-Assy 6500-400 added 6500-161 Hub Assy w/Extension Shaft, Remove 6500-160 Hub, 6500-147 Extension Shaft and 2616-099 Set Screw 2X, Add 6500-123 Bushing Lock Plate	4/29/15	DC
	K	Add Bushing plate 6500-123	1/14/15	DC
Pg2	L	Replace 6500-161 w/6500-162 Hub Ext Spined, Replace 2600-717 with 2600-719 Gearbox, Remove 6500-146 Coupling, 2616-088 Set Screws and Keyways	5/9/16	DC

6500-440 Cover Turret Assembly



- 3. Item 6500-066 Manual Installation Quick Install
  - 2. Item 6500-065 Manual Installation Swing Gate
  - 1. Item 6500-043 Wire Set
- Included with Operator not Shown.

Notes: Unless Otherwise Specified.

**PROPRIETARY AND CONFIDENTIAL**

THE INFORMATION CONTAINED IN THIS DRAWING IS THE SOLE PROPERTY OF DOOR KING. ANY REPRODUCTION IN PART OR AS A WHOLE WITHOUT THE WRITTEN PERMISSION OF DOOR KING IS PROHIBITED.

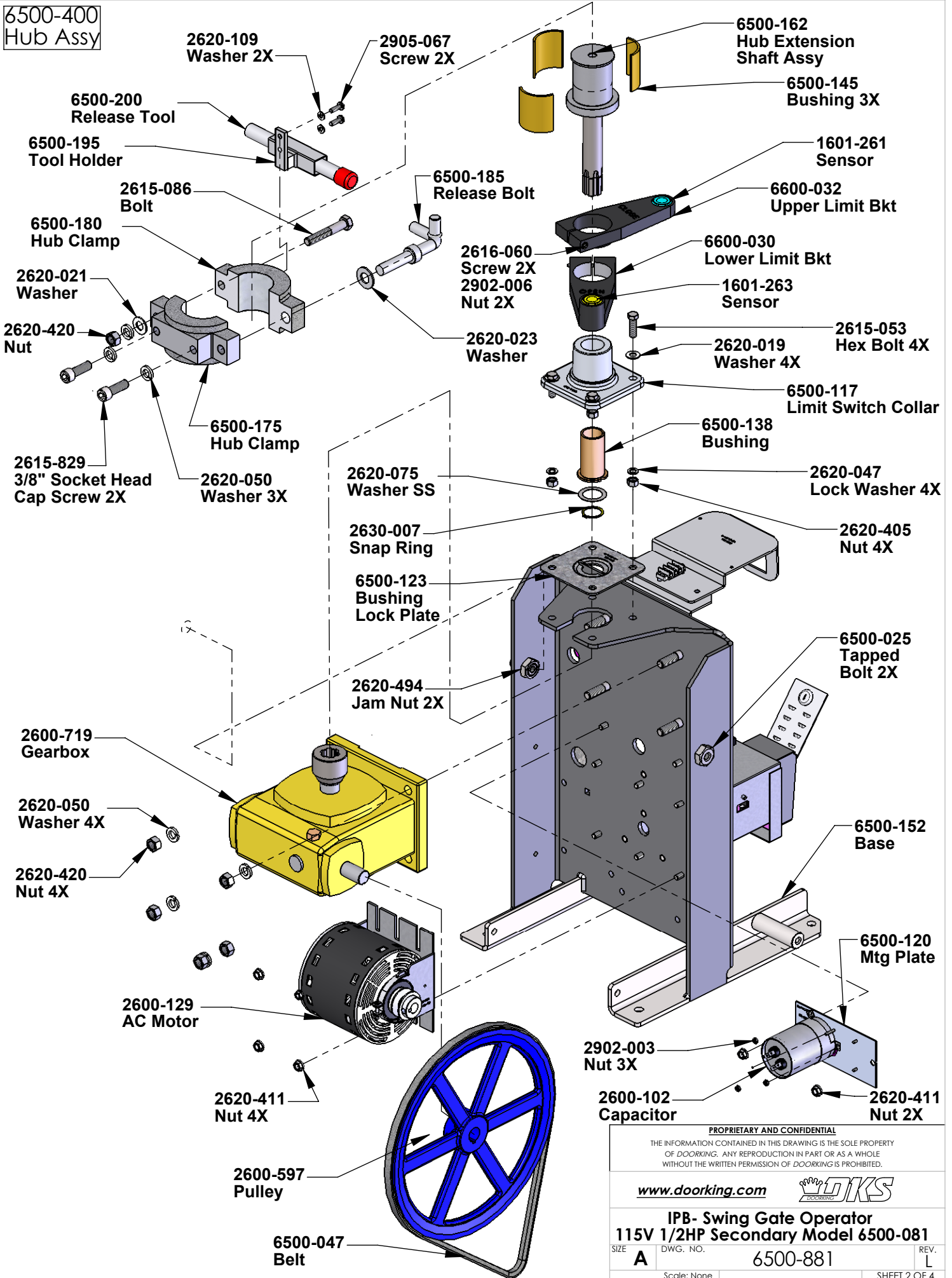
[www.doorking.com](http://www.doorking.com)

**IPB- Swing Gate Operator  
115V 1/2HP Secondary Model 6500-081**

SIZE	DWG. NO.	REV.
<b>A</b>	6500-881	<b>L</b>

Scale: None SHEET 1 OF 4

**6500-400  
Hub Assy**



PROPRIETARY AND CONFIDENTIAL

THE INFORMATION CONTAINED IN THIS DRAWING IS THE SOLE PROPERTY OF DOORKING. ANY REPRODUCTION IN PART OR AS A WHOLE WITHOUT THE WRITTEN PERMISSION OF DOORKING IS PROHIBITED.

[www.doorking.com](http://www.doorking.com)

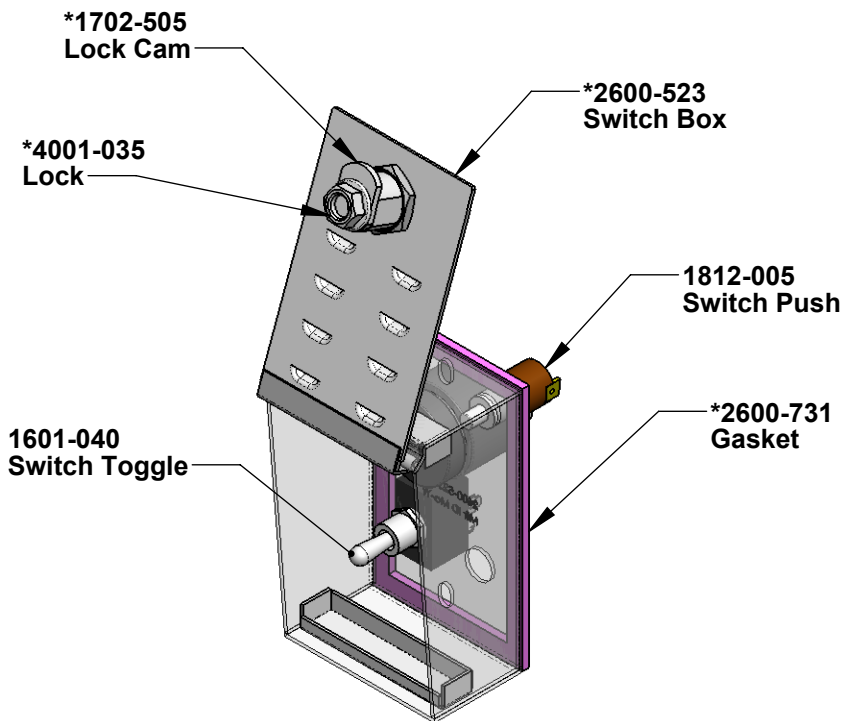
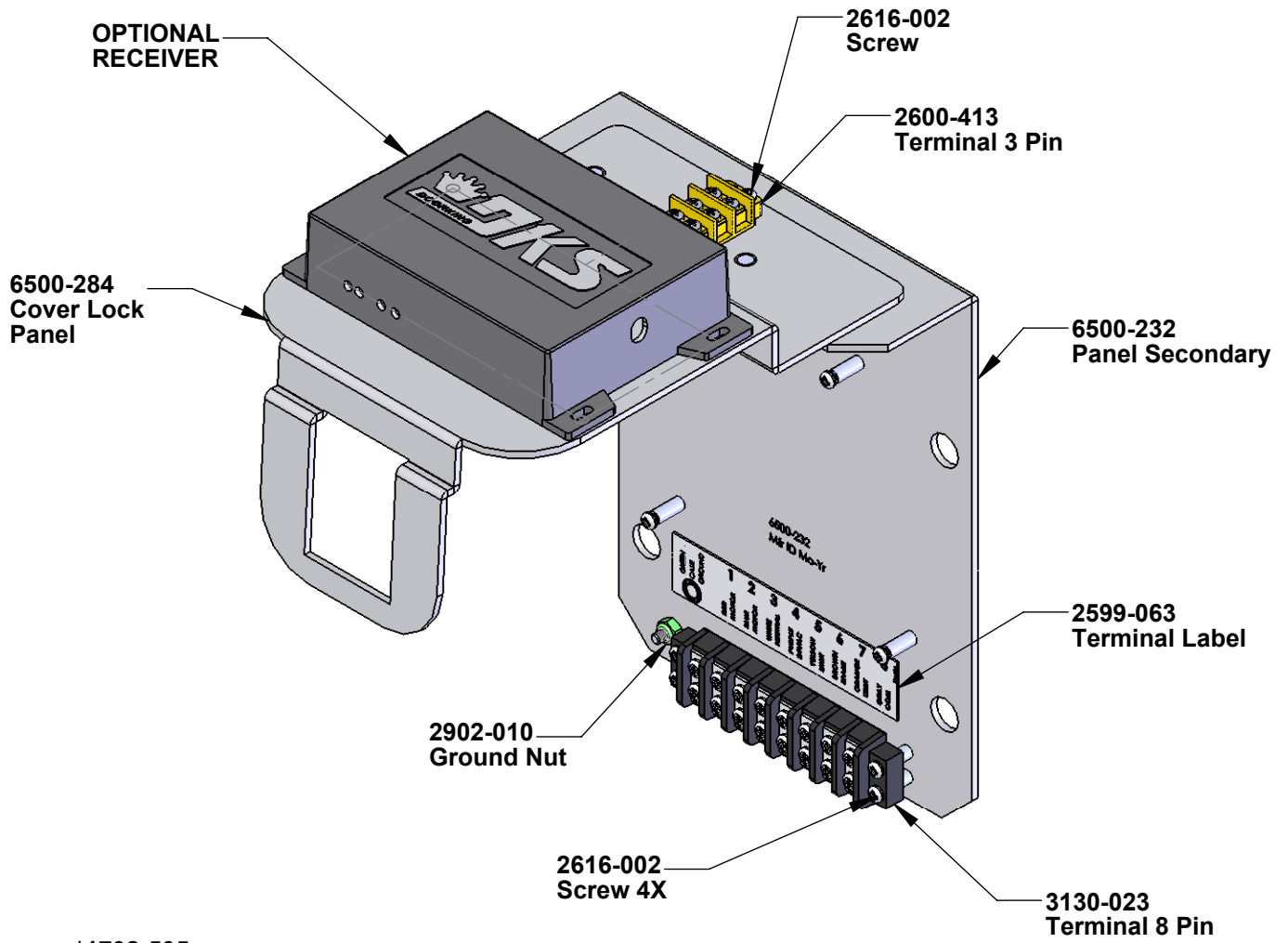


**IPB- Swing Gate Operator  
115V 1/2HP Secondary Model 6500-081**

SIZE **A** DWG. NO. **6500-881** REV. **L**

Scale: None

SHEET 2 OF 4



**\*2600-523 Switch Box Assy**

- 1.
  - 
  -
- Notes: Unless Otherwise Specified.

**PROPRIETARY AND CONFIDENTIAL**

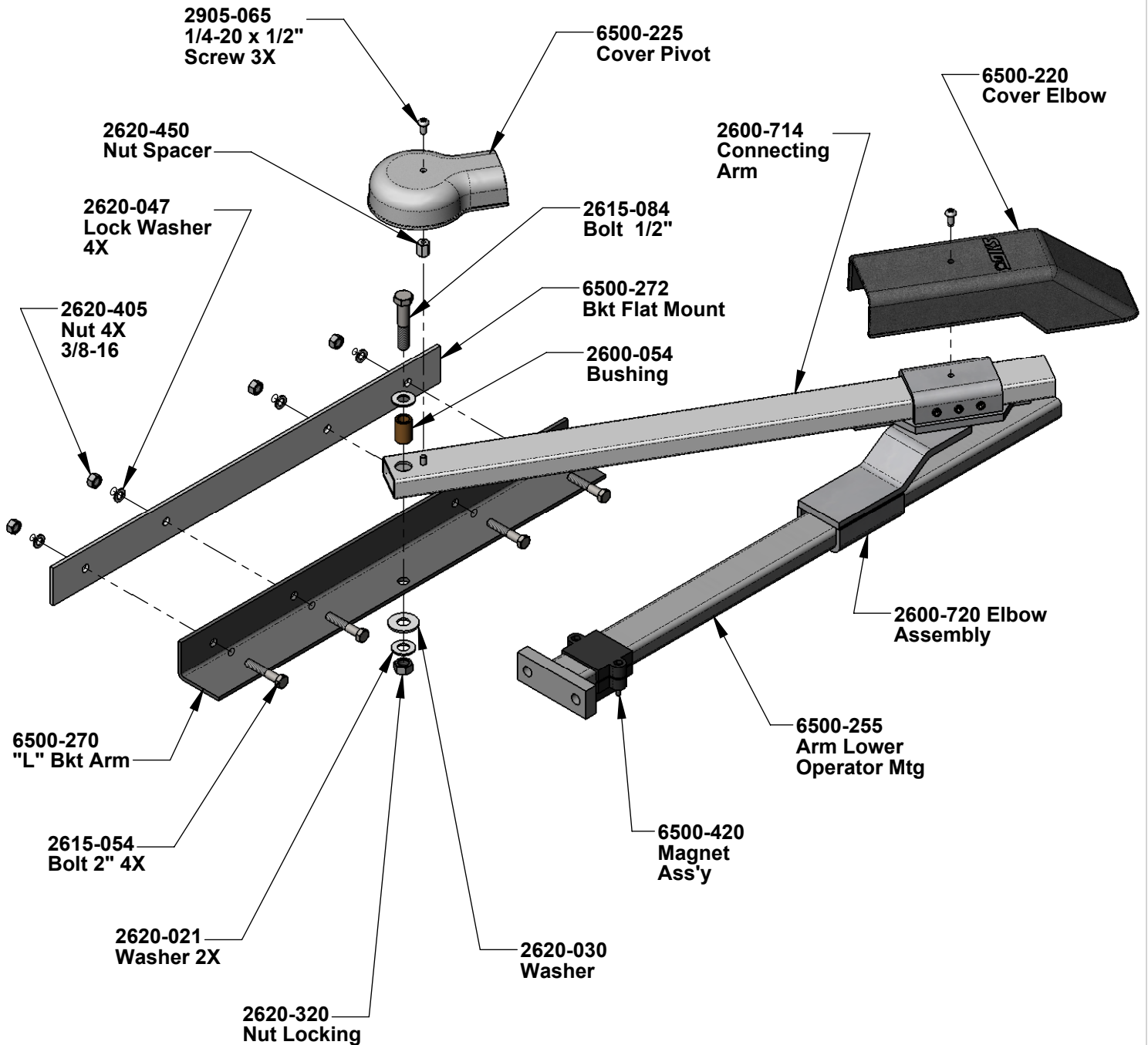
THE INFORMATION CONTAINED IN THIS DRAWING IS THE SOLE PROPERTY OF DOORING. ANY REPRODUCTION IN PART OR AS A WHOLE WITHOUT THE WRITTEN PERMISSION OF DOORING IS PROHIBITED.

[www.dooring.com](http://www.dooring.com)

**IPB- Swing Gate Operator  
115V 1/2HP Secondary Model 6500-081**

SIZE	DWG. NO.	REV.
<b>A</b>	6500-881	<b>L</b>
<small>Scale: None</small>		<small>SHEET 3 OF 4</small>

6500-430 Full  
Assembly  
Main Arm



Notes: Unless Otherwise Specified.

<b>PROPRIETARY AND CONFIDENTIAL</b>			
<small>THE INFORMATION CONTAINED IN THIS DRAWING IS THE SOLE PROPERTY OF DOORING. ANY REPRODUCTION IN PART OR AS A WHOLE WITHOUT THE WRITTEN PERMISSION OF DOORING IS PROHIBITED.</small>			
<a href="http://www.dooring.com">www.dooring.com</a>			
<b>IPB- Swing Gate Operator 115V 1/2HP Secondary Model 6500-081</b>			
SIZE <b>A</b>	DWG. NO. 6500-881	REV. L	
<small>Scale: None</small>		<small>SHEET 4 OF 4</small>	