

Skylink® Garage Door Receiver Model 318R

1. INTRODUCTION

In this package, you will find a garage door receiver, a red / black wire and a clip.



Garage Door Receiver



Red/Black Wire

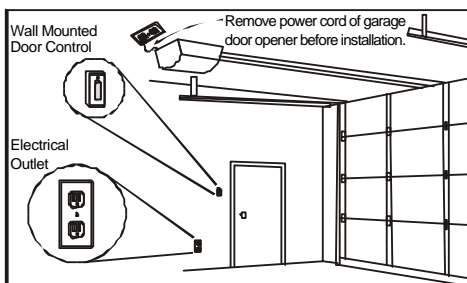
2. INSTALLATION

The following instructions will show you how to install the receiver. After installing, the keychain transmitter can be used to operate your garage door opener.

You need to locate 2 things inside your garage to install the receiver:

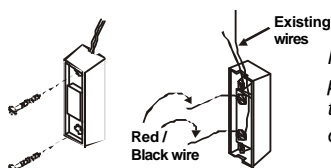
- 1) the wall-mounted door control;
- 2) an electrical outlet, select an electrical outlet different from the one already connected to the power cord of the garage door opener to reduce the chance of interference. The further distance between the receiver and the garage door opener, the less interference between 2 devices.

Note: The length of the red/black wire is 20ft, so the receiver must be plugged into an electrical outlet that is within 20ft of the wall mounted door control. If there is no electrical outlet within 20ft of the wall mounted door control, an extension cord can be used for temporary installation.



WARNING Unplug the power cord of your garage door opener before installation to ensure power is not connected.

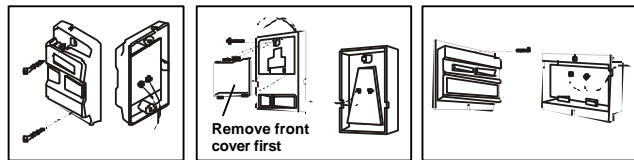
- 1 Remove the wall-mounted door control from the wall by removing the screws. Connect the stripped ends of the Red/Black wire to the 2 terminals (2 screws) on the back of the wall mounted door control. (Polarity does not matter.)



Note: There should be another pair of wires connected to the 2 terminals already. Do not remove/disconnect these existing wires.

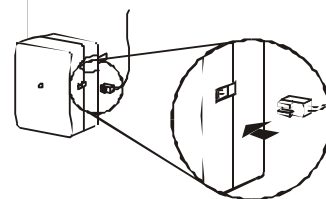
2. INSTALLATION (CONT)

Note: If you see no screws mounting the wall mounted door control, the screws are probably underneath the front cover. Remove the front cover by pressing onto the tabs on top of the cover.

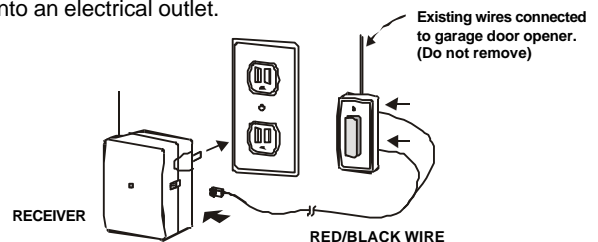


Different wall-mounted door controls

- 2 Plug in the connector end of the Red/Black wire to the 318TR receiver. Note the orientation of the male & female connector.



- 3 Plug the receiver into an electrical outlet inside the garage. The red light on the receiver should be on after being plugged into an electrical outlet.



Note: Alternative wiring options are available, the receiver can be connected directly to the opener's motor. Please contact customer service for further information regarding alternative wiring options.

- 4 Re-connect the power cord of the Garage Door Opener.
- 5 The Left button on the transmitter has been programmed to operate the receiver. Activate this button will trigger the receiver therefore opens the garage door.

3. TROUBLE SHOOTING

Q: Door opener does not react after pressing the button on the transmitter ?

- A:*
- Ensure when the button on the transmitter is pressed, the red light on the transmitter comes on. Otherwise, check if the battery is inserted properly.
 - The left button on the transmitter should be pressed, not the right button
 - If the red light on the receiver flashes when you press the left button on the transmitter, but the door opener does not respond, please ensure the red/black wire is successfully connected from the receiver to the wall mounted door control.
 - Ensure the wires that are previously connected to the wall mounted door control are not loose.
 - Ensure the code setting on the transmitter is the same as the receiver. Refer to section 4 to check the code setting.

4. CHANGE THE OPERATION CODE FOR RECEIVER

It is recommended to randomly set the operation code for your remote control to avoid interference from other devices. Follow the instructions below to change the operation code.

This instruction does not demonstrate how the transmitter should be installed, please refer to the user's instructions of the transmitter.